

In a world where downtime is more wishful thinking than reality, it's essential that your home offers true tranquility, space, and comfort.

MTM RESIDENCES PRESENTS: THE ULTIMATE IN MODERN LIVING



Designed to make the most of natural light, with gorgeous city views, soaring ceilings, 8ft doors, and spacious enough for the largest of families, this really is a place where your home really can be your castle.

Introducing the utmost in luxury living:

THE UTOPIA

FRONT & SIDE ELEVATION



REAR ELEVATION

ROOF:

Sleek Metal Seamed Roof with unique "V-Roof" Entryway

1st FLOOR:

Exquisite modern/contemporary home with open floorplan. Kitchen, living room and all main rooms on this floor. Beautiful city views with full deck and glass elevator

LOWER FLOOR:

Large flexible room with wine cellar, guest bedroom and bathroom, and huge bonus room with steps to outside back yard area.

EXPERTLY DESIGNED TO MAKE THE MOST OF EVERY INCH OF SPACE,
PROVIDING LUXURY LIVING FOR THE LARGE OR GROWING FAMILY

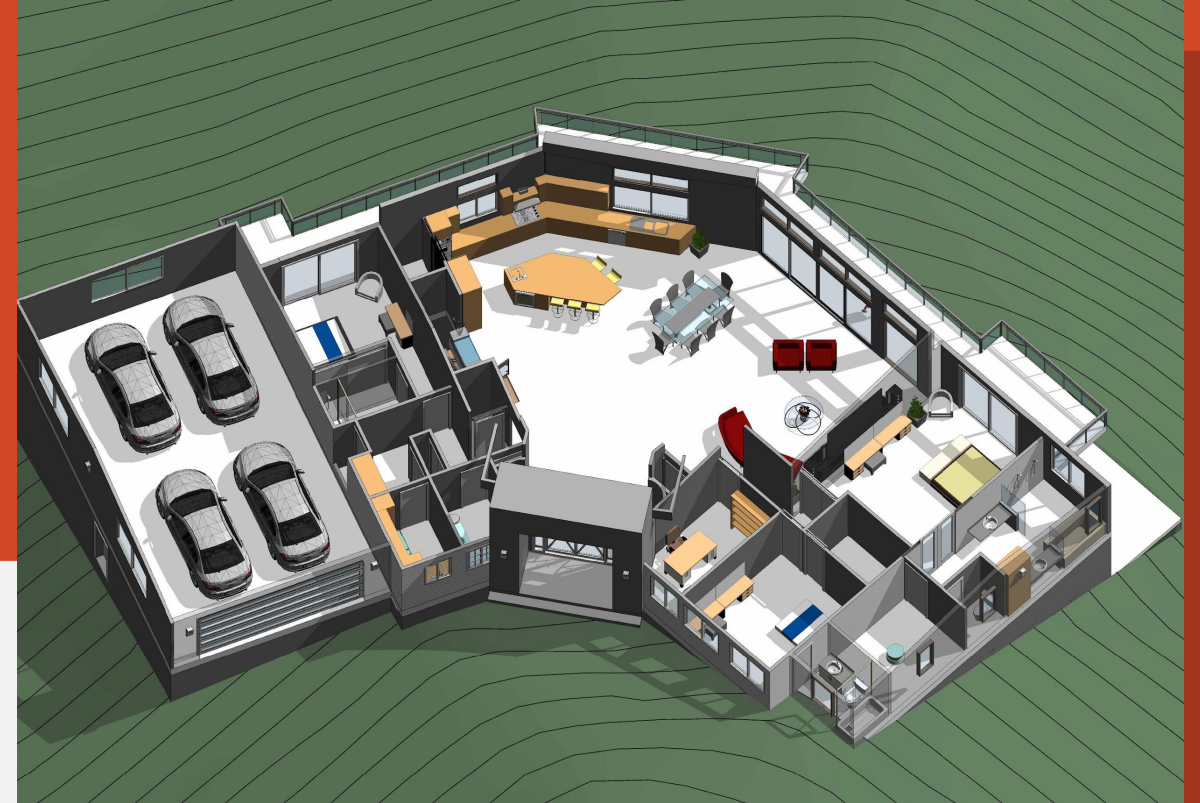


1ST FLOOR



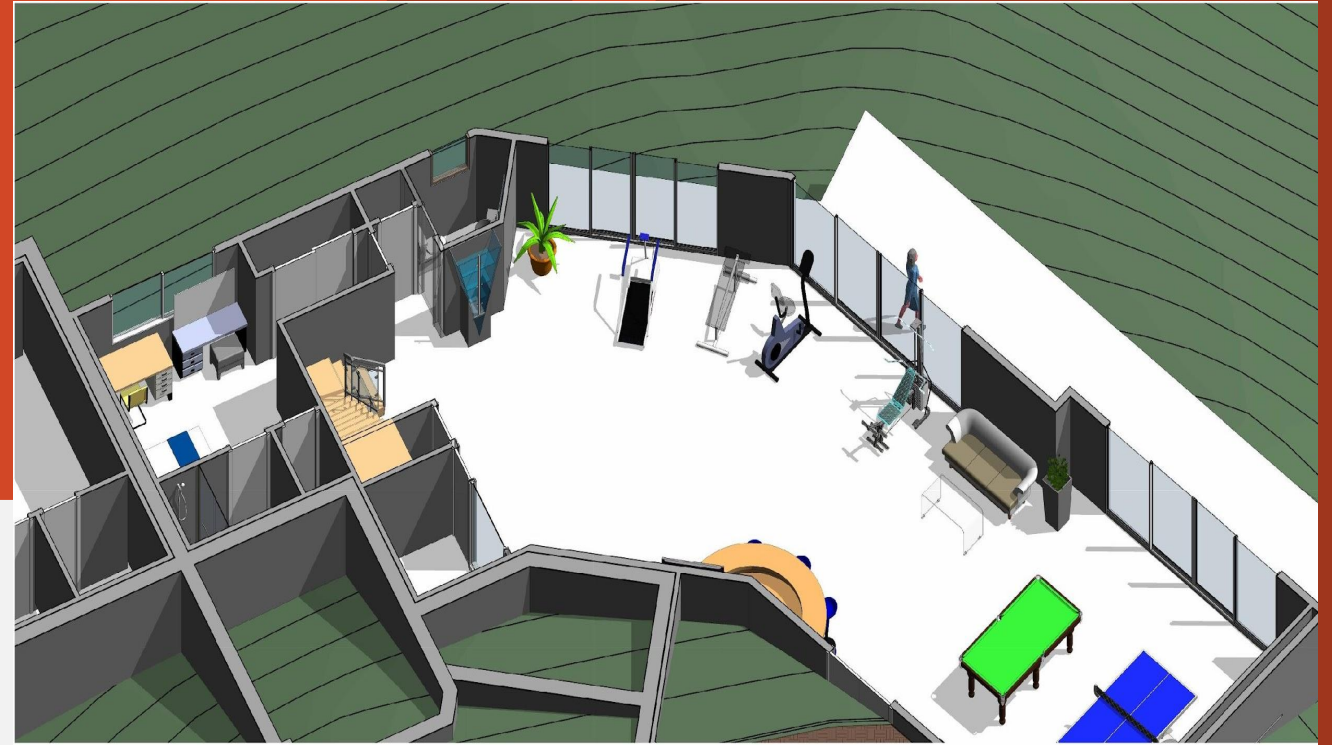
LOWER FLOOR

1ST FLOOR



A vast living/family room with large window for that all-important city view and lots of natural light. 4-car garage to first floor, spacious dining and living room with large open kitchen, top quality kitchen units with pantry, luxury materials, and incorporating the latest smart technology. Master bedroom, 2 bedrooms, 3-1/2 bathrooms, study and laundry room on 1st floor with glass elevator to lower floor.

LOWER FLOOR

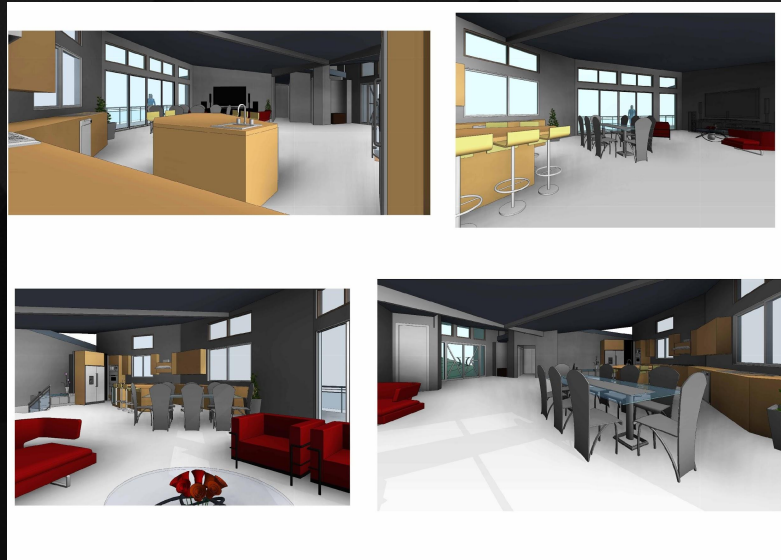


Boasts huge flex-room, guest bedroom with bathroom, wine cellar, and optional theater room or in-law unit with double doors leading to a balcony and rear deck and patio to backyard. Lower floor offering large windows to benefit from wonderful city views and lots of natural light. The flex room can be modified to fit your personalized specifications.

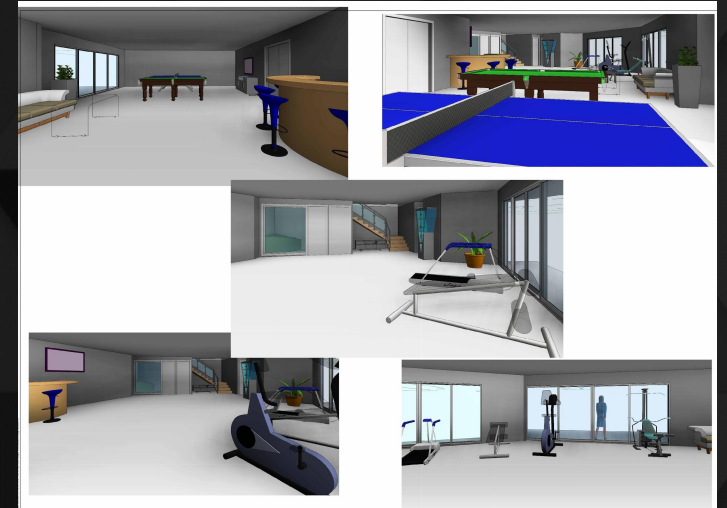
FLEX-SPACE AT LOWER LEVEL AND LARGE OPEN SPACE ON FIRST FLOOR OFFERS MULTIPLE CHOICES FOR LIVING SPACE, INCLUDING AN OWNERS' SUITE, 2 BEDROOMS, EN-SUITE, AND DEN/STUDY



1st FLOOR 3D From Entryway



1st FLOOR 3D From Inside



LOWER FLOOR 3D VIEW

UNIQUE MODERN CONTEMPORARY HOME



The crowning glory of this gorgeous living space; the top floor master bedroom suite with all associated amenities. Boasts two huge balconies with gorgeous city views—ideal for an alfresco breakfast in the morning sun, with step out to backyard with patio. Vaulted ceilings, clean lines, fresh modern finishes, and smart technology makes this 2-story home a true haven of peace and tranquility.